

2006 ANNUAL REPORT OF THE
STRAFFORD COUNTY DEPARTMENT OF CORRECTIONS

The year of 2006 was our second full year of operating the new jail. We saw a 25% increase of our population from 306 on January 1, 2006 to 382 on December 31, 2006. The direct supervisor philosophy of managing inmates continues to be successful, which helps staff cope with the growing population. Revenues from bed space for the year was \$4,490,325.68, up 170%. Our Strafford County inmate population was relatively stable this year with no relevant increase from January 1, 2006.

I am pleased to announce that all Strafford County Correctional Officers completed the yearly required forty (40) hours of training necessary to maintain their certification. We hired nineteen (19) Officers this year (a 46% increase from last year) who will all eventually go through the Correctional Officer Training Academy. We had two Correctional Officer classes graduate this year, with eight (8) officers completing the 120 hour training offered by the New Hampshire Association of Counties (NHAC).

New for this year is discharge planning by Unit Case Manager Isabel Padial. Her report can be seen below. I believe this is crucial to the successful transition of inmates in need who are released without resources into the community. We want to reduce the number of people walking out our door unprepared for reintegration into the community.

Two hundred and forty one (241) students toured our facility in 2006. Most of them talked to inmates who volunteer to talk about what jail is like and how drug/alcohol abuse lead to their incarceration. This program is highly popular with the students and they frequently write the inmates to thank them.

In March of 2006, Jamie Dunn was promoted to Director of our Community Corrections Program and the program was organizationally changed to be under Administrator Ray Bower.

Our work release revenues were down this year from \$41,187.83 to \$23,758.86. I believe this is because we have been quite successful with the Step Down program which releases inmates to home monitoring and working at jobs in the community instead of living in the jail. Our mission to hold inmates in the least restrictive environment possible is being met by this program. Also, we contributed \$1,189.53 to the Victim's Assistance Program through the Work Release program. The re-Treatment Addictions Program for males and the Women's Recovery Group for females showed a huge success this year, not only in numbers of applicants, but also in the reported influence it had on the attendees. When we moved the Women's Recovery Group to the women's work release section of the jail, the result was the exclusive use of our work release area in the new jail for two Therapeutic Community Programs. The only programs of this kind in a New Hampshire County jail, all 103 admitted inmates demonstrated incredible enthusiasm for their program. Three counselors provided direction to keep these inmates working on their 800 page workbook exercises and thinking about their personal issues that were brought up frequently during group

meetings. No television is allowed and the inmates start the three (3)-phase program by giving up all visits and telephone calls for the first month. Weekly inspections are frequently attended by local officials that have included Superior and District court judges, Strafford County prosecutors, public defenders, the Strafford County Board of Commissioners, and several Strafford County Legislative Delegation members. I invite anyone who wishes to see inmates at their best to attend one of these inspections by calling the jail and scheduling a visit with Captain Bird at 742-3310. In my 26 years of experience at the Jail, I have never seen inmates so enthusiastic for what the jail offers them as these men and women. It is too soon to tally recidivism rates, but I am optimistic that they will be substantially below what is expected for County inmates in general population.

This year, Kim Weibrecht, Esq. was hired to help with our legal issues and assist with grant writing for a proposed Mental Health Court program. She was previously a public defender and Assistant Court Clerk in Strafford County Superior court. We are very lucky to have someone with her experience on board.

We had our Third Employee Recognition Banquet for department personnel this year. I am proud to announce the following award winners for 2006:

Employee of the Year Award:	Education Director Jake Collins
Community Service Award:	Paul Giampa
Community Outreach Award:	Vicki Heyl/Sid Bird
Supervisor of the Year Award:	Records Supervisor Sandy Miller
Officer of the Year 1 st Shift:	Christopher Dame
Officer of the Year 2 nd Shift:	Officer M. Landry
Officer of the Year 3 rd Shift:	Officer B. Goutier
Rookie of the Year:	Officer James Lynn
Life-Saving Award:	Sgt. Donna Roy, Cpl. Edward McGowen, and Officers Steven Pollard, Richard South, Bruce Goutier, Andrew Bromfield, Daniel Dore
Humanitarian Award Program:	Officer David Baggs
Innovation Award:	Sgt. Donna Roy
Great Ideas Certificate:	Robin Pomeroy
Commendation Letters:	Cpl. Edward McGowen, Officer Natasha Chapman

As I look back over the year 2006, I am proud to realize that we have once again continued to meet the challenges of running a correctional facility on the cutting edge of corrections. With the major construction expansion ended, we now have to work within the existing structure to meet the changing demands of providing this service. To meet our mission goals efficiently and effectively we have had to innovate, change and expand our services. I would like to express my heartfelt thanks to my staff for consistently performing above and beyond their required duties. Without these dedicated men and women, we would not have such a successful operation. An

example of our success is that before the Two Bridges Regional Jail opened in Warren, Maine, the staff was all given a tour of our facility in order to observe how a direct supervision jail should be run.

I would also like to thank the Strafford County Board of Commissioners and Administrator Ray Bower for their enthusiastic and reliable support. They have always been supportive and interested in everything that is accomplished at the Jail that contributes to the excellent morale of our employees. They always attend our awards banquet and I appreciate that they put forth the effort to connect with us in this and many other ways. Following are reports from the various departments:

DISCHARGE PLANNING REPORT

Our official Inmate Discharge Planning Program for the Strafford County Department of Corrections began in February of 2006. The objective of the Discharge Planning Program is to assess inmates' individual needs prior to their release, as well as to assist with their transition into the community. An assessment is done by conducting a face to face interview with the inmate, completing an Inmate Release Questionnaire, and discussing and providing information regarding community services. Once the assessment is completed, the Unit Case Manager will develop a Discharge Plan that is suited to the inmate's needs. The Unit Case Manager will meet with the inmate once again to review the discharge plan and assist with any coordination of community services.

One hundred forty-eight (148) inmates were interviewed for discharge planning in 2006. Out of that figure, sixty-three (63) needed substance abuse treatment in the form of individual or group counseling, AA and NA meetings, outpatient or inpatient treatment. Forty-seven (47) inmates were without medical insurance and some used the emergency room when they needed medical attention. These inmates were encouraged to use their local health center or the mobile health van as opposed to using the emergency room for non-emergencies.

Forty-one (41) inmates needed their GED and most were referred to Dover Adult Learning Center of Strafford County (DALC) to enroll in classes. Thirty-four (34) of the inmates needed Mental Health treatment and were provided with information on the local Community Mental Health Center, and for some an appointment was made prior to being discharged. Some inmates were referred to Catholic Charities and other counseling services in the area. Twenty-six (26) inmates needed employment and were given information about NH Works and local employment agencies. Twenty (20) inmates were in need of housing, which is substantial considering the barriers to finding affordable housing in the area. Seventeen (17) inmates needed public assistance as they did not have money for basic necessities. These inmates were referred to Health & Human Services, City Welfare and food pantries. Eleven (11) inmates needed

medication and received a three day supply of medications from the Medical Department at SCDOC upon their release.

Five (5) of our inmates were court ordered to go to Anger Management Classes and were provided with contacts in the community to enroll. Four (4) inmates needed to pay fines and one (1) inmate paid his fines prior to being released with the money he made working at the jail. Four (4) inmates needed a Driver's License and were informed about the necessary steps they need to take in order to get their license from the NH Department of Motor Vehicles.

Four (4) inmates needed dental services and were informed about the dental programs at Avis Goodwin, Wentworth Douglas Hospital, and the Dental Clinic at New Hampshire Technical Institute. Three (3) inmates were court ordered to attend Domestic Violence Classes and they were given a list of providers in the community. Three (3) inmates needed to register as sex offenders and were informed about the laws regarding registering as such. Two (2) inmates were court ordered to take Sex Offender Classes and were provided with the information necessary to start the process. Two (2) inmates required their Social Security cards and were provided with the information to apply for the card. Two (2) inmates needed non-driver ID's and were instructed on what steps to take. Two (2) inmates requested Parenting Classes and were referred to Cooperative Extension and the HUB Family Resource Center. Two (2) female inmates were in need of Domestic Violence Counseling and were referred to A Safe Place. Some inmates met with a Domestic Violence Advocate prior to being released.

Overall, Discharge Planning was very productive. Most inmates were very appreciative of the service. Some inmates who had been at the SCDOC before mentioned they had never done a discharge plan and thought it was helpful and a good idea to meet with someone prior to their release. Although Discharge Planning is helpful to most inmates in terms of providing resources and guidance to inmates, once the inmate is released there is no guarantee, despite our encouragement, that the inmate will follow through with their Discharge Plan.

Service	Number of Inmates
Substance Abuse Treatment	63
Health Care	47
GED	41
Mental Health	34
Employment	26
Housing	20
Public Assistance	17
Meds	11
Anger Management	5
Pay Fines	4
Driver's License	4
Dental Services	4
Domestic Violence Classes	3
Register As Sex Offender	3
Sex Offender Class	2
Social Security Card	2
Valid ID	2
Parenting Classes	2
Domestic Violence Support	2

Respectfully submitted,
Isabel Padial, Unit Case Manager

PROGRAMS REPORT

Educational Programs

Education: GED preparation and Adult Basic Education. Dover Adult Learning Center provided GED and Adult Educational classes four days each week for a total of 17 instructional hours per week, an increase from 13 in 2005.

Special Education: Special Education was offered by Southeastern Regional Educational Services Corporation. We offered ten hours per week of services to eligible inmates.

Volunteer Tutors: 7 volunteer tutors worked in the facility in 2006, providing a combined average of approximately 8 tutoring hours a week.

Education Attendance: Average weekly enrollment in GED classes: 51 inmates

Special Education Attendance

GED Exam: 48 inmates were administered the GED exam (53 in 2005). 31 (44 in 2005) passed the exam and 10 did not pass. Seven inmates completed a partial exam and one test was incomplete.

English as a Second Language (ESL): Dover Adult Learning allocated 3 hours per week for ESL classes.

Substance Abuse Programs

Drug and Alcohol Counseling: SCDOC contracted with Southeastern New Hampshire Services to provide 20 hours per week of drug and alcohol counseling services.

Alcoholics Anonymous and Narcotics Anonymous: AA groups for both male and female inmates were held weekly this past year. NA groups were held bi-weekly.

Addiction Recovery Center Attendance: 15 (25 in 2005) inmates were accepted into the ARC program and were allowed daily release to this program. The drop from last year is attributed to our in-house Therapeutic Community program enrollment filling this need.

Pre-Treatment Addictions Program: This intensive substance abuse treatment program had 103 admissions in 2006 (6 in 2005).

Mental Health Programs

Anger Management Training and Life Skills Classes: SCDOC provided 4 classes per week of the anger management and life skills program.

Positive Options Program: This program offers individual modules of anger management, attitude adjustment and life skills classes. Four program intern counselors provide individual services to 12 inmates weekly (2 interns in 2005 provided service to 8 inmates weekly).

Vocational Services

Pre-Employment Program (PEPP): This program teaches inmates job search skills, helps them to prepare resumes and job applications and teaches job interview skills. This program is held weekly for a total of 6 hours.

Labor Room Program–Employment Security Program: This program provides direct employment assistance and placement into work release jobs through SCDOC and the NH Employment Office. Assistance provided as needed to sentenced inmates. 21 inmates were placed into jobs in this program.

Career Assessment: This program assisted inmates with vocational evaluation and planning. In 2006, 79 inmates completed this program (44 in 2005).

Work Release Program

Work Release Inmates: There were a total of 44 inmates on work release for 2006.

10 inmates were released for Child-Care Release.

Religious Services Conducted

Sunday Service: Weekly Catholic group that meets on Sunday for the female inmates:

Sunday Book of Daniel Bible Study: Weekly group for female inmates newly added this year. This is conducted by a husband-wife team from Riverside Rest Home.

Monday Night Bible Study: Bible study conducted for female inmates and special needs inmates.

Catholic Services: Weekly Catholic program offered to females and to male general population units.

Bible Study and Music Ministry: Program for male general population that includes bible study and spiritual music.

Chaplain: Jail chaplain is available four days per week for individual religious counseling and guidance.

Pastoral Counseling: A reverend from Grace Community Church offers pastoral counseling to inmates weekly.

Catholic Counseling: Two volunteers currently offer individual Catholic counseling to inmates.

Confessional and Reconciliation: A Catholic priest is available upon request for these services.

Internships

SCDOC hosted 4 interns in 2006. 2 interns were from the Justice Studies Program at the University of New Hampshire, and one intern from Southern New Hampshire University. During the academic year, each of these interns provided approximately 9 hours per week of service. Duties included: Assistance with educational programs, assisting the training officer and administrative support.

Inmate Services

Library: The programs department solicited and managed donations of more than 7,000 books in 2006. Currently there are more than 11,000 titles in the library. There is also a library with about 1,000 books in the Annex. The DVD movie library has

continued to be a success with a current total of 300 movies in stock for use in the housing units.

Law Library: The program department maintains current New Hampshire law and Federal laws on computer, and has volumes of Federal law available in book form. These materials can be requested and scheduled. In 2006, an average of 5 inmates used these materials daily (3 in 2005).

Sewing Program/Crochet Program An average of 6 inmates participated bi-weekly in the sewing guild program to produce items for local charities (4 in 2005).

Training

Volunteer Orientation: in 2006 the program department presented 4 volunteer orientation classes, training a total of 37 new volunteers and program vendors.

Respectfully submitted,
Victoria Heyl, Program Director
Jake Collins, Education Director

JAIL INDUSTRY PROGRAM REPORT

I am happy to report that the Jail Industry showed an increase in work and inmate workers for 2006. The number of workers for 2006 was 74 and work hours generated was 12,198. The Jail Industry took over the laundry operations in 2006 for both the Jail and Riverside Rest Home's linens. Precision Assembly has expanded with us, as has Airmar, our newest company. Airmar began operations with the Jail Industry in March of 2006.

A small local monthly newspaper called Critter Exchange is packaged here, once a month. This growth has increased our inmate workforce to about 15, with some fluctuation in those numbers from time to time.

Our goal for the coming year is to expand further in order to increase the opportunity for inmates to broaden their skills, reinforce good work ethics, and provide inmates with money upon release to better equip them for successful re-entry into society. We will continue to work to effectively use our space in the most creative way possible to accomplish this goal.

The year 2006 marks twenty (20) years of continuous Jail Industry partnerships with the private sector for paid work, in-house for inmate workers.

Family Reception Center

The Family Reception Center has been in operation for almost 5 years. The mission of this endeavor is to provide a bridge of communication between the inmate families and the Department of Corrections by providing resource materials and information to maneuver more successfully within the justice system; thereby maintaining the bond between families and those incarcerated.

The Department of Corrections continues to be complimented for creating a kind, friendly, and welcoming atmosphere, by both professionals who visit our facility for clients and families of inmates.

The Family Reception Center requires no tax dollars and is funded totally through charitable gifts and grants. An inmate picture taking project was initiated by the Jail Industry to raise additional monies for the Center. This service was requested by the inmates. The Family Reception Center has a very supportive Board, representing members from several different agencies, as well as a very dedicated group of volunteers.

Respectfully submitted,
Marilyn Allen
Industry Director

COMMUNITY CORRECTIONS REPORT FOR 2006

The year of 2006 was our third full year of operation. Community Corrections consists of four programs: Pretrial Supervision, (formally called Bail Supervision), Administrative Home Confinement, a court ordered alternative to incarceration in jail, the Step Down Program, a unique program to Strafford County that rewards inmates for utilizing treatment options while incarcerated and then seeks to amend the sentence to allow home confinement, and the Weekender/Community Work Program which is used as an alternative to weekend sentences and benefits non-profits, municipal and County organizations with free labor and services.

Pre-Trial Bail Supervision: This program's main objective is the safe release and supervision of appropriate pre-trial defendants from jail who may otherwise be incarcerated while awaiting trial. The levels of supervision are initially suggested to the court by the Intake Coordinator, and then are regulated by the Case Management Team at their weekly meetings. Supervision can be increased or decreased depending on the participant's behavior. Over 300 participants were supervised this year and over 600 assessments were completed on incarcerated individuals for this program.

Administrative Home Confinement: Administrative Home Confinement is a sentence that the Court utilizes, mostly for habitual offenders, that allows the inmate to go to work and/or school; or take care of their children and family while being supervised by SCCC with an electronic monitor at their residence. SCCC supervised over 120 persons in 2006.

Step Down Program: The Step Down Program is a unique program to Strafford County. This program assesses persons sentenced to jail time and who prove, by their attitudes and actions, that they are taking responsibility for their crimes and addressing rehabilitative areas of concern as recognized by the sentencing court and jail assessments. If they have been meaningfully utilizing programs offered by the jail for self-improvement, then a motion to the court for an amended sentence would be filed and, if granted, they are released on the electronic monitor to be supervised by a case manager. They will then continue their specific treatment programs on the outside. Over 20 participants were granted Step Down by the courts in 2006.

Weekender/Community Work Program: The Community Work Program offers the courts an alternative to a jail sentence. Defendants can plea to a suspended sentence and complete a term of community work to be determined by the court, failure of which brings forth the suspended sentence. The Work Program Supervisor takes a crew of workers out 7 days a week, Saturdays and Sundays included, performing community service. We have expanded this year to have two crews on the weekends, using case managers as supervisors and a newly acquired van for travel. Work crews consist of persons sentenced directly to the program combined with selected participants of the Strafford County Academy Program, Strafford County Community Corrections, and as needed, sentenced inmate workers.

COMMUNITY WORK PROGRAM REPORT FOR 2006

David Bedard, Director of the Community Work Program has offered these statistics:

Participants

Inmates:	1st Qtr	2nd Qtr	3rd Qtr	4th Qtr
Males	40	44	35	40
Females	14	17	3	12
Sentenced to Program:				
Males	95	95	72	60
Females	43	27	27	34
Community Service:				
Males	5	29	44	54
Females	2	11	18	20

Breakdown of Hours

	1st Qtr	2nd Qtr	3rd Qtr	4th Qtr	Total
Inmates	4488	5403	2629.25	3904	16424.25
Sentenced to Program	3576	3167.5	3237.5	2573	12554
Community Service/Drug Court	88	750	1207	1516	3561
Total Hours for Workers	8152	9320.5	7073.75	7993	32539.25

Ordered to Program Breakdown

	1st Qtr	2nd Qtr	3rd Qtr	4th Qtr
Total Orders	130	131	155	99
Rochester	16	19	16	13
Durham	0	1	0	0
Dover	82	58	79	47
Superior	17	14	7	6
Drug Treatment Court	13	23	39	23
Misc Community Service	0	1	2	1
Community Corrections	0	15	12	9
Pass	66	60	88	81
Fail	74	58	79	62
Partial Completion				7

Total Work Hours by City/Town **Workhours**

Barrington	120
Dover	7,603
Durham	88
Farmington	1,168
Lee	82
Madbury	236
Middleton	232
Milton	168
Rochester	8,764
Rollinsford	48
Somersworth	2,542
Strafford County	11,489
Total	32,539

Breakdown of Clients

Barrington

Barrington Selectman Project

Dover

Dover Pool
 Cocheco Valley Humane Society
 Pine Hill Cemetery
 Woodman Institute
 Dover Housing
 Riverside Carnival
 Community Partners
 Superior Court
 Child Advocacy Center
 Garrison Hill
 Forest Glade Cemetery
 Southern NH University
 Southeastern NH Services
 Dover Water Treatment
 Dover PD - Teen Center
 Dover Public Library
 Dover Facilities, Grounds & Parks
 McConnell Center
 City of Dover
 Dover Adult Learning
 Bell Center

Madbury

French Cross Road

Hours

Durham

Mill Pond Center

Farmington

Riverbank
 Farmington Boys & Girls Club
 Town of Farmington

Lee

Town of Lee
 Lee Police Department
 Town of Madbury
 Cemetery

Middleton

Town of Middleton

Milton

Town of Milton

Rochester

Gonic Fire Department
 Rochester Recreation Dept.
 City of Rochester
 Rochester Arts
 Rochester Historical Society
 Avis Goodwin
 Rochester Fire Department
 Roch & E. Roch Public Library
 Rochester District Court
 Rochester Opera House

Hours

88.00

84.00

128.00

956.00

26.00

56.00

60.00

56.00

232.00

168.00

52.00

724.00

88.00

432.00

380.00

8.00

452.00

744.00

98.00

1,100.00

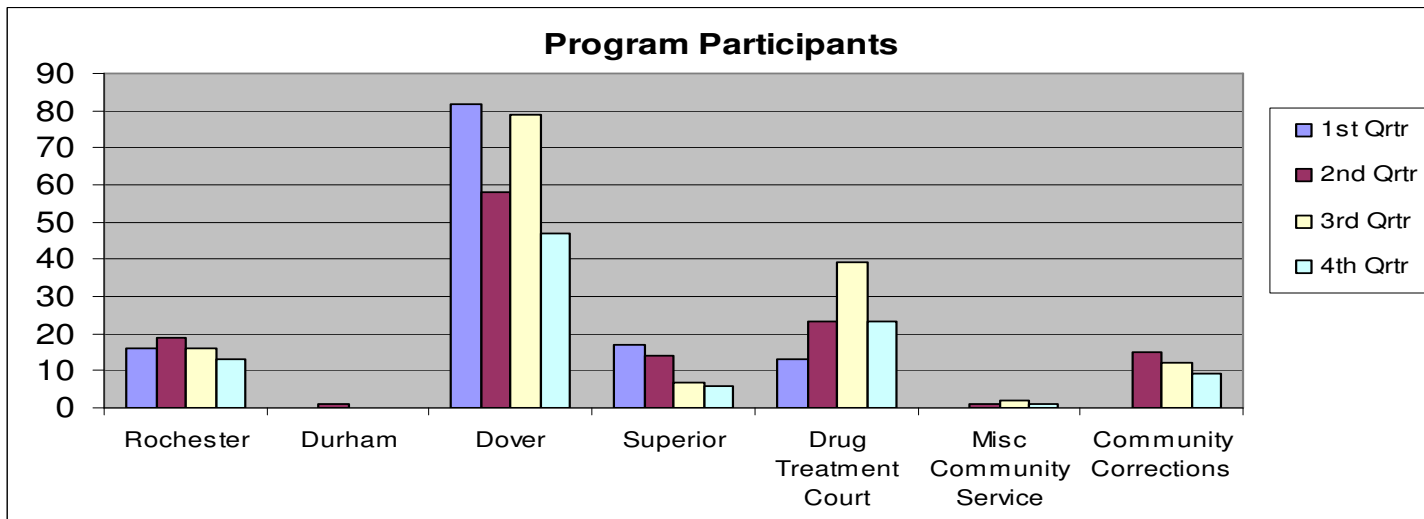
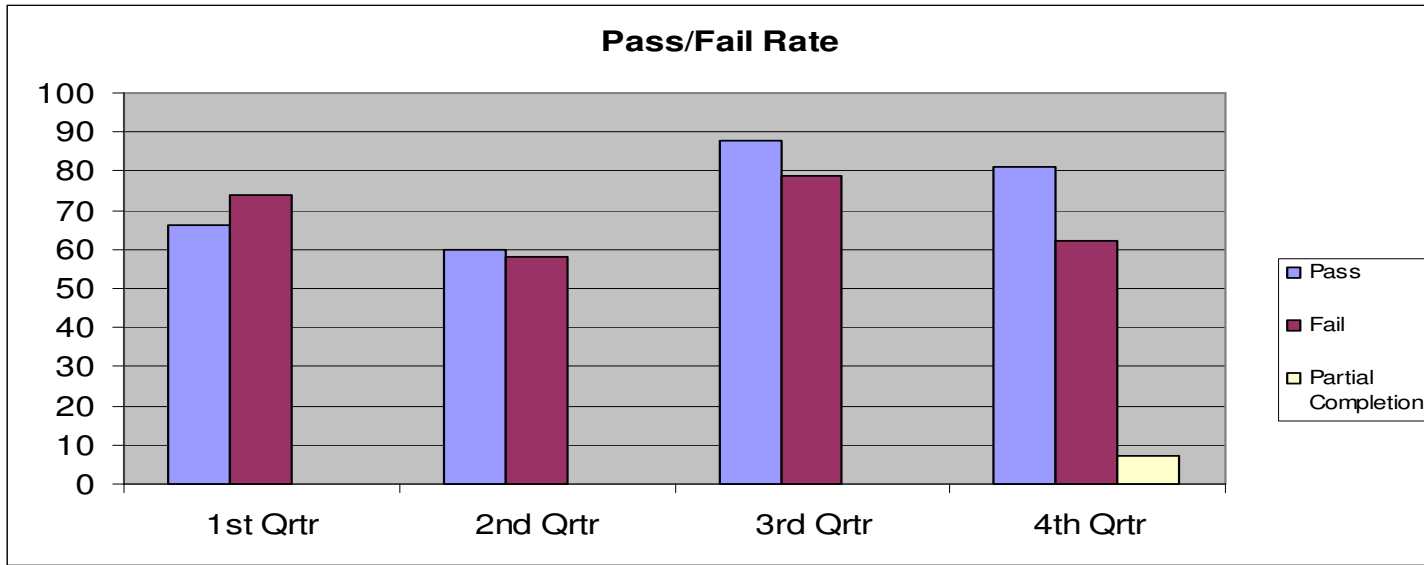
Library	80.00	Cocheco River	64.00
		Elderly & Adult Services	20.00
<u>Rochester</u>	<u>Hours</u>	<u>Strafford County</u>	<u>Hours</u>
Rochester Community Center	56.00	Henderson Property	288.00
Franklin Street Cemetery	596.00	FEMA	24.00
Rochester Ice Arena	861.00	Red Cross	56.00
Gerry's Food Pantry	300.00	Hampton PD	104.00
St. Elizabeth Seton School	160.00	ASPCA	16.00
Rochester Middle School	400.00	Community Action Program	404.00
Spaulding High School	304.00	Dept. Health & Human Services	45.50
Chamberlain Street School	219.00	Fit It Program	266.00
School Street	64.00	HUB	21.00
Allen School	120.00	Meals on Wheels	184.00
Monarch School	224.00	Milford IB Delivery	189.00
Salvation Army	136.00	State of New Hampshire	8.00
Rochester Fairgrounds	16.00	Strafford County/Barrington	104.00
Lilac City Estates	468.00	Donation Depot	1,736.00
Rochester Cemetery	200.00	UNH Cooperative Extension	152.00
Homemakers	260.00	NH Employment Security	16.00
Roger Allen Park	217.75	CWP	280.00
<u>Rollinsford</u>		Special Olympics	1,879.00
Rollinsford Fire Department	48.00	Strafford County Complex	5,716.00
<u>Somersworth</u>			
Somersworth Housing Authority	1,559.25		
Children's Festival	40.00		
City of Somersworth	727.00		
Somersworth Day Care	24.00		
Somersworth/Maple St. Cemetery	192.00		
<i>Totals Hours Worked & Savings to the Community</i>			32,539.25

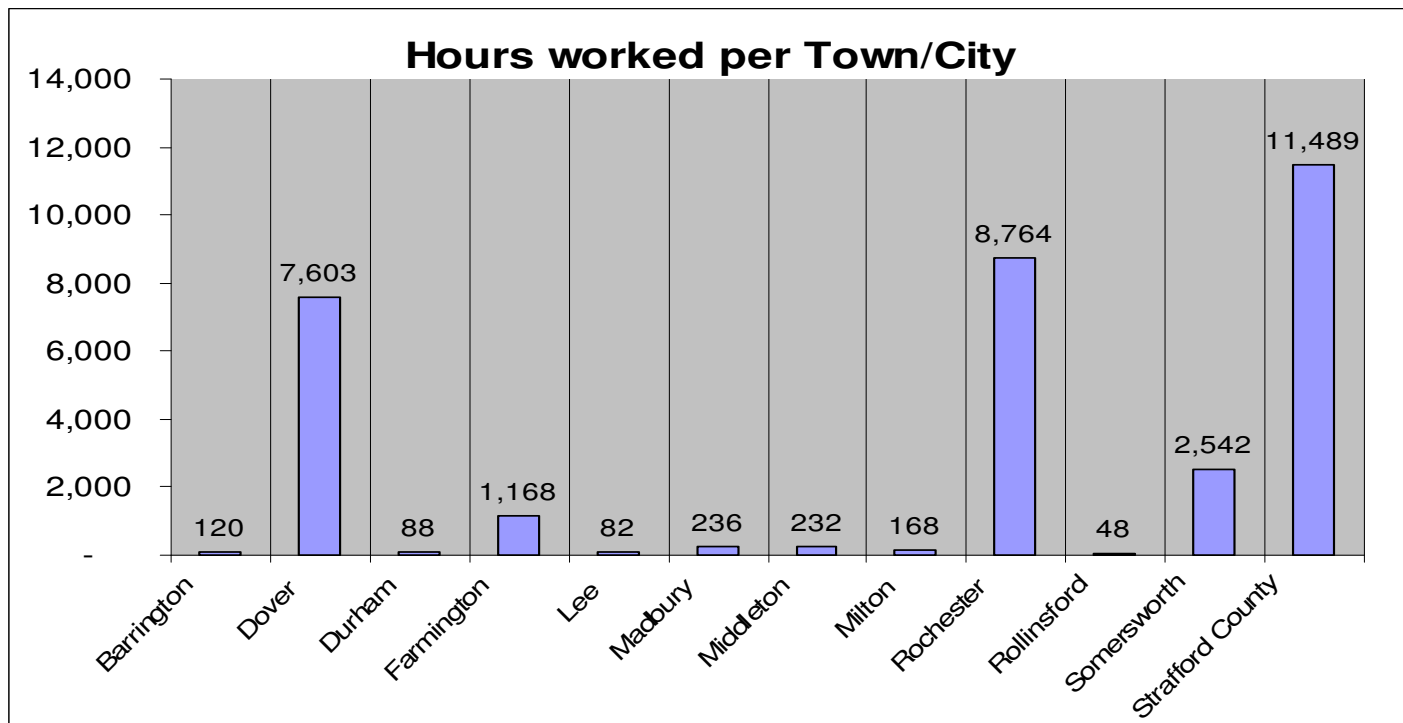
Total Donations for 2006

	Amount
Cord Wood for County	\$ 2,750.00
Gerry's Pantry Donations	\$ 950.00
Supplies/Furniture/Equipment	\$ 6,318.42
General Fund Donations	\$ 1,300.00
Christmas Tree Fund	\$ 200.00
Jail Industries Delivery	\$ 1,150.00
Total Donations	\$ 12,668.42

Respectfully Submitted,

David Bedard
Community Work Supervisor





Our new offices located next to the Sheriff's office will be short lived as we will be moving to the William A. Grimes Justice and Administration Building (aka the County Courthouse) next year. We will be housed with the Academy Program and Drug Court.

Community Corrections staff has kept their ongoing commitment to be involved in the criminal justice and law enforcement communities. Interacting with various officials helps us maintain rapport, as well as keep up with changing ideas. We are involved in the Strafford County Drug Court, Pre-Treatment Addictions Program Advisory Committee, Mental Health Council, Domestic Violence Project Advisory Board, Strafford County Criminal Justice Council, Jail Spiritual Care Board, Jail Industry Advisory Board, Family Reception Advisory Board, and Special Olympics. SCCCPC looks forward to continue to expand its innovative services, with the Commissioners' direction.

Community Corrections staffing went through some major changes this year with staff turnover and hiring. This is the 2006 Strafford County Community Corrections team who has exhibited a committed, professional and ethical service for the past year:

Joseph Devine, Case Manager
 Frank Laratonda, Case Manager
 William Britton, Case Manager
 David Bedard, Director Work Program
 Paul Giampa, Assistant
 Brian Hester, Deputy
 Dan Gagne, Deputy
 Tim Morgan, Deputy

Jayne Young, Intake Coordinator
Denise Morin, Administrative Assistant
Krista Shevenell, Administrative Assistant

In closing I want to thank the Strafford County Board of Commissioners for their continued support of this agency, and County Administrator Ray Bower for his dedicated guidance throughout the year.

Respectfully submitted,
James Dunn, Director
Community Corrections

In closing, I would like to thank the Strafford County Board of County Commissioners and Administrator Ray Bower for their unfailing support without which we would not have been successful. They have always been available to me and my staff, showing an interest that fosters excellent morale.

Respectively submitted,
Warren Dowaliby
Warren Dowaliby
Superintendent